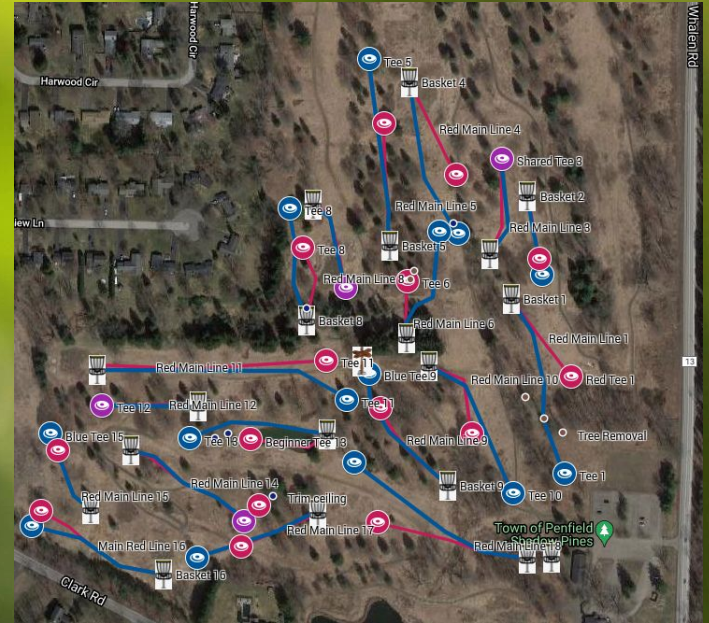


Disc Golf Course Proposal for Shadow Pines



Presented to Penfield Town Board
June 23, 2021 by BME and the GRDGC

Disc Golf, Shadow Pines and the GRDGC

- One of the world's fastest growing sports with a vibrant local history and community
- A premier location
- Greater Rochester Disc Golf Club and the Town of Penfield



Hole 3 Tee Box
Current Perspective





Greater Rochester Disc Golf Club and Rochester's History

The GRDGC:

- Established in 1999 to promote and grow disc golf in the Rochester Area
- ~150 annual dues paying members and 1500+ Facebook group members
- Runs leagues, tournaments and community events
- Works with towns and local municipalities to
 - Install, design and re-design courses
 - Help fundraise and provide labor for installation of new courses
- Members help with:
 - course maintenance
 - park cleanup
 - charitable causes
 - hosting clinics for schools and communities
 - running tournaments and leagues



Rochester's rich history:

- Home to Hall of Famer Jim Palmeri - a founding father of disc golf
- Location of the oldest Disc Golf Tournament in the world - the American Flying Disc Open (1974), now called Rochester Flying Disc Open (this year will be 48th tournament)
- Host to 3 World Championships and 1 National Tour event

Course Design Process



- BME and GRDGC collaboration
- Begin with Shadow Pines Conceptual Map
- Explore property through the eyes of multiple assessors
- Highlight the best of existing aesthetic features of the land
- Prioritize safety
- Create a variety of shot shapes and landscapes for a range of skill levels
 - Regarding skills, design layouts for both regional professionals and those who are developing their skills and power
 - **Blue layout** is to meet needs of average open player (PDGA* Rating 970+) and challenge advanced and recreational players (900+) who can throw 300-450 feet.
 - **Red layout** is to be inviting and interesting to all novice (850-) and growing recreational and intermediate players (935-) who can throw 125-300 feet.
 - Create a variety of experiences for which a player can be challenged, be entertained and grow as a player
- Fill gaps in disc golf needs in the area
- Design Validation
 - Host events using temporary course involving players of a variety of skill levels
 - Review safety and quality of hole design

Local Course Baselines

| Course | Town | Par | Distance | UDisc Rating / DG Course Review Rating | Estimated rounds in 2020 | Tee/Basket Options per Hole |
|-----------------|-------------|--------|----------|--|-----------------------------|--------------------------------|
| Ellison* | Penfield | 57 | 6237ft | 4.4/3.7 | ~30,000** | 1 |
| Widener Park | Chili | 58 | 7214ft | 4.3/3.9 | ~20,000 | 2 |
| Parma | Spencerport | 56 | 6373ft | 4.4/4.4 | ~16,000 | 1*** |
| North Ponds | Webster | 27**** | 1893ft | 3.5/2.5 | ~5,000 | 1 |



Hole Layout Design with Tee Sign

Shadow Pines
Disc Golf Course



HOLE 13

Par 3
410'
240'

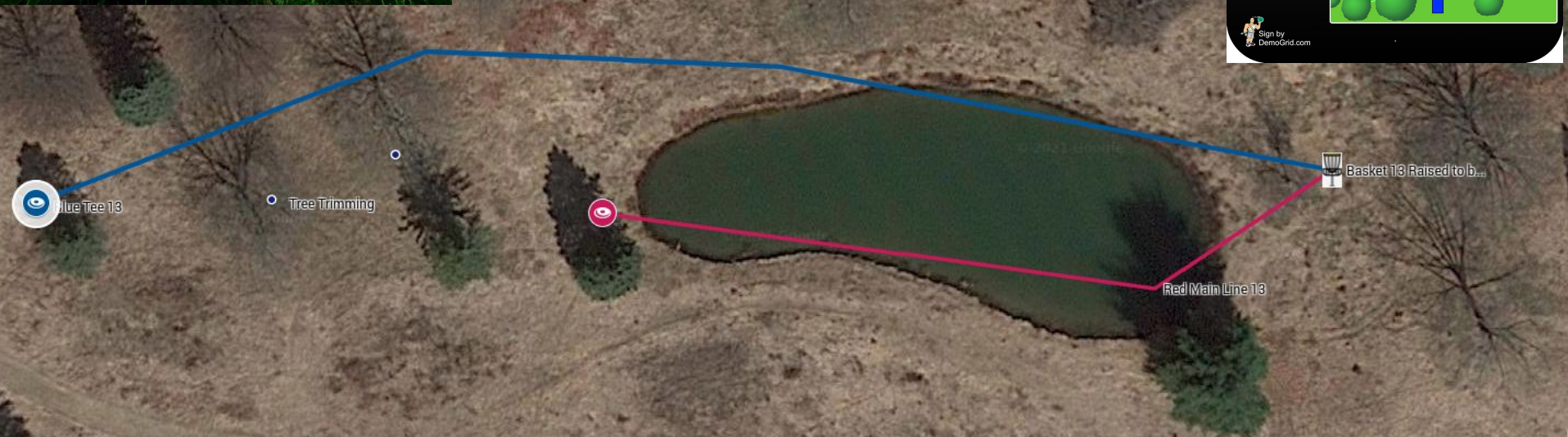
Out of Bounds
Pond is OB.



Sign by DemoGrid.com

Basket 13 Raised to b...

Blue Tee Perspective



Projected Cost Breakdown

| Item | Quantity | Est. Cost Per | Est. Total Cost |
|----------------------|-----------|---------------|-----------------|
| Baskets | 19 | \$399 - \$429 | \$7600 - \$8200 |
| Tee Pads (turf) | 18 (Red) | \$200 | \$3600 |
| | 18 (Blue) | \$300 | \$5400 |
| Signage | 18 | \$100 | \$1800 |
| Kiosk | 1 | \$500 | \$500 |
| Total Projected Cost | | | \$19,500 |





Shadow Pines Fundraising - GRDGC 2021 goals

- 36 Tee Pads - currently have 75% of fundraising goal
 - Working for 2 years in anticipation of project
 - Have acquired turf for tee pads
 - Finished fundraising through pop up tournaments at Shadow Pines if course was mowed
- Signage - could raise funds for signage through advertising sales on signs
- 19 Baskets for course - need to find alternate source of funding if installation in 2021
 - GRDGC could fund practice basket (1)
 - Options for other 18 baskets
 - Local donors - Business/Individual
 - Town of Penfield

Responsibilities/Commitments



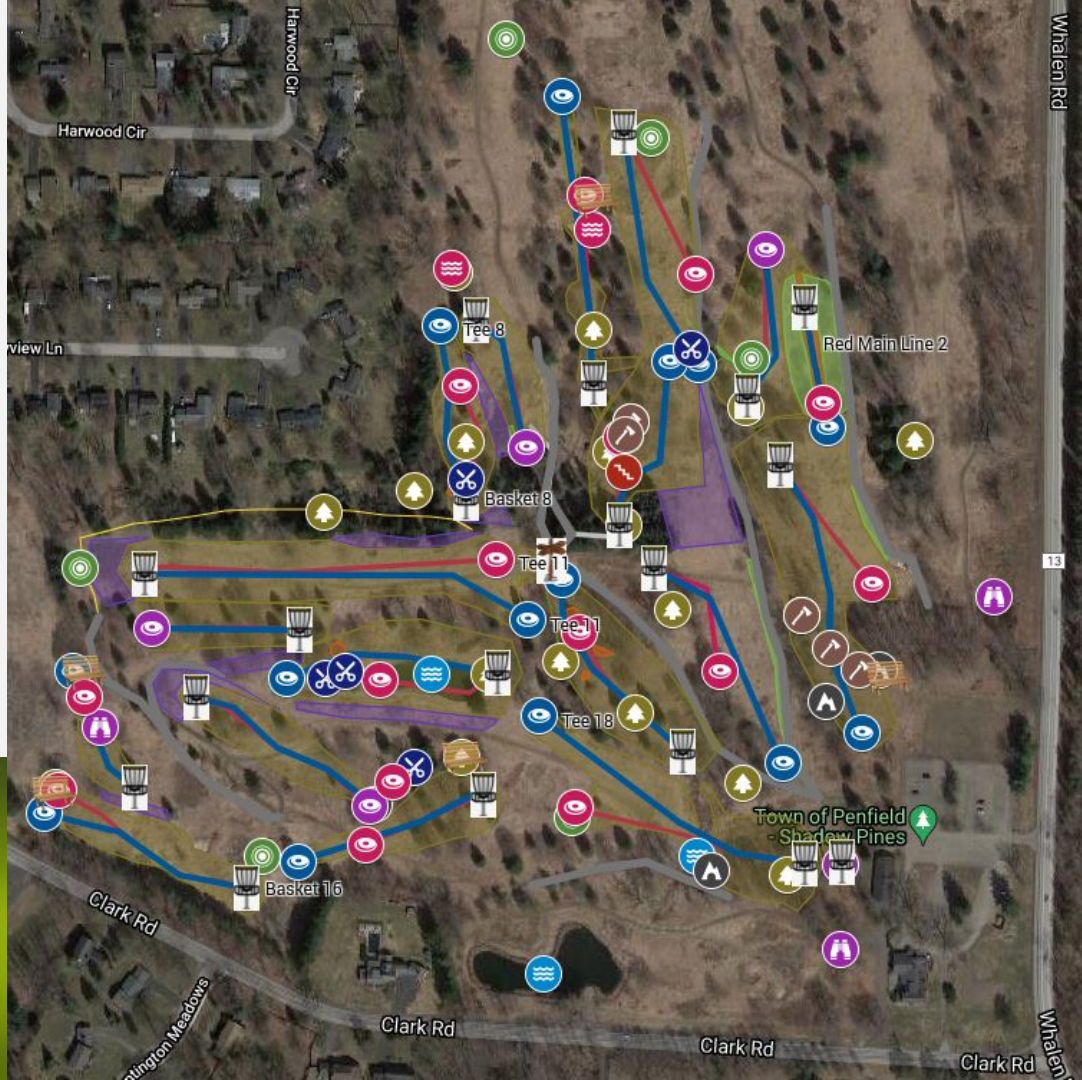
- **Installation of course**
 - Town of Penfield
 - Grubbing, brush hogging and mowing course layout to make playable
 - Dig tee pad locations with bobcat/small equipment
 - Remove 4" of material to make tee pads flush with ground - to make easier to mow
 - GRDGC
 - Install tee pad frames, gravel, landscape fabric and turf tee pads
 - Install and concrete baskets in place
 - Install and create signage for course
- **Maintenance of Course**
 - Town of Penfield
 - Weekly mowing of course - during mowing season, 3" to 4" cut length in designated areas
 - Monthly string trimming - can be reduced with use of mulch if available from town (GRDGC to help)
 - GRDGC
 - Work days for course clean-up and regular maintenance
 - Possible planting of trees to help define fairways and develop course as it ages and changes

A close-up photograph of a field of green grass, likely a type of oat or similar grain, with the heads of the grass in focus. The background is a soft, out-of-focus landscape with a hint of a blue sky and distant hills. A white decorative graphic is overlaid on the image, consisting of a horizontal line with a small white circle at each end. The word "Appendix" is written in a white, sans-serif font across the middle of the line.

Appendix

Click link for [detailed full course Google map](#) including:

- maintenance areas (initial installation with tree trimming and cutting and regular mowing)
- existing park features
- alternative disc golf lines, basket and tee placements
- suggested park enhancements.



Course Design Resources

- [Professional and Amateur PDGA Player definitions](#)
- [PDGA Skill Level Guidelines](#)
- [PDGA Par Guidelines](#)

Course Comparisons

- [UDisc Rochester Area Courses](#)
- [Disc Golf Course Review Roc Area Courses](#)
- [World's Best Disc Golf Courses 2021: #1-#100](#)

Disc Golf Growth

- [UDisc Growth Report](#)
- [Figuring Out How Much Disc Golf Was Played In 2020](#)
- [PDGA Year End Demographics Report Shows Record Growth in 2020](#)

Greater Rochester Disc Golf Club

- <https://grdgc.org/>
- [Facebook](#)

Penfield Community Partners

- Browncroft Community Church (Kim Igoe and Aaron McGinnis)
- Penfield Troop 312 (Mark Sowden)
- Penfield Cross Country Team (Dave Hennessey and Tony Kerr)